

10.1071/PC23027

Pacific Conservation Biology

Supplementary Material

Long-term strategies for studying rare species: results and lessons from a multi-species study of odontocetes around the main Hawaiian Islands

Robin W. Baird^{A*}, Sabre D. Mahaffy^A, Brittany Hancock-Hanser^B, Tori Cullins^C, Kristi L. West^{D,E}, Michaela A. Kratofil^A, Daniel M. Barrios^A, Annette E. Harnish^A, Paul C. Johnson^F

^ACascadia Research Collective, 218 ½ W. 4th Avenue, Olympia, Washington, 98501, USA.

^BSouthwest Fisheries Science Center, 8901 La Jolla Shores Drive, La Jolla, California, 92037, USA.

^CWild Side Specialty Tours, Wai‘anae, Hawai‘i, 96792, USA.

^DHealth and Stranding Lab, Hawai‘i Institute of Marine Biology, Kāne‘ohe, Hawai‘i, 96744, USA.

^EHuman Nutrition, Food and Animal Sciences, College of Tropical Agriculture and Human Resources, University of Hawai‘i at Manoa, Honolulu, Hawai‘i, 96822, USA.

^FPaulphin Photography, 95-059 Waihonu Street, Mililani, Hawai‘i, 96789, USA.

*Correspondence to: R.W. Baird, Cascadia Research Collective, Olympia, WA, USA Email: rwbaird@cascadiaresearch.org

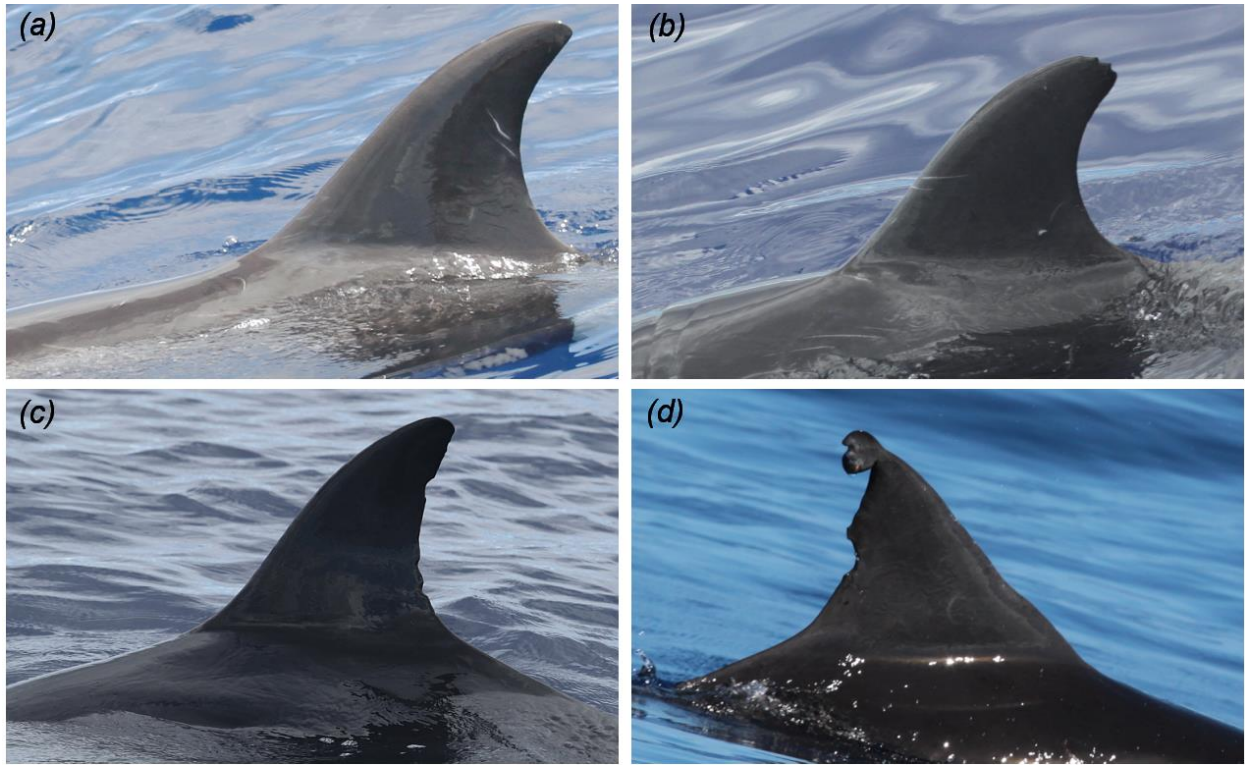


Figure S1. Distinctiveness ratings for pygmy killer whales. (a) HIFa659, considered not distinctive (D1). Photo by Colin J. Cornforth. (b) HIFa657, considered slightly distinctive (D2). Photo by Kimberly A. Wood. (c) HIFa350, considered distinctive (D3). Photo by Annie M. Gorgone. (d) HIFa398, considered very distinctive (D4). Photo by Jessica M. Aschettino.

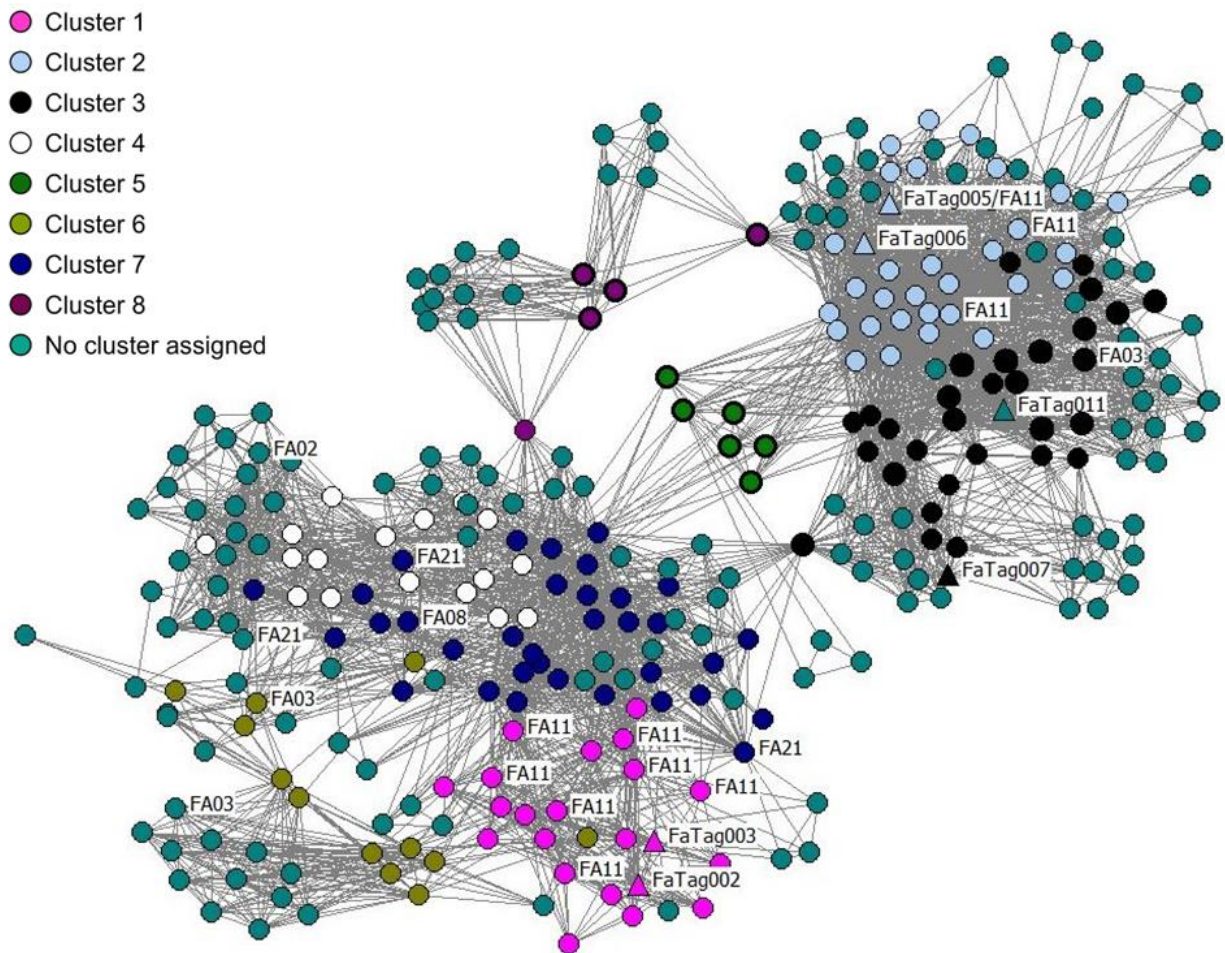


Figure S2. The main component of the pygmy killer whale social network showing individuals by cluster (see key), with individuals with insufficient sample sizes to determine cluster indicated. Tagged individuals are indicated by triangular symbols, and labels are included for tagged individuals (FaTag0##) and individuals with known mitochondrial haplotypes (FA##).

Table S1. Definitions of behaviors and behavioral states used for pygmy killer whales.

Predominant (i.e., > 50% of individuals) behavioral states are recorded, but it is important to note that behavioral states are not necessarily mutually exclusive and with larger groups individuals within a group may be engaged in different behavioral states.

Behavior	Definition
Milling	Slow non-directional movements
Logging	Resting motionless at the surface with part of the body (the head and part of the back, sometimes extending to the dorsal fin) exposed
Social behavior	Interactive movements between individuals (within or between species) not involving prey capture or prey handling, typically involving body contact and non-directional movements that may be fast or slow
Slow travel	Directional orientation sustained, no bow wake or splash created upon surfacing, typical speed over ground < 3 km h ⁻¹
Travel	Sustained directional movement, bow wake or splash sometimes created upon surfacing, typical speed over ground > 3 km h ⁻¹
Foraging	Non-synchronous surfacings of individuals within group, non-directional, long dives